

ARC30 SD card manual V1 © 2020 Butel llc

- 1. Prepare your sd card**
- 2. Read data from Icom IC-R30**
- 3. Send data to Icom IC-R30**
- 4. Install a SD card**
- 5. Format your SD card**
- 6. Misc info and tip**

1. Prepare your sd card

Icom IC-R30:

The scanner is programmed using the built in USB port in SD card mode.

Also make sure a formatted SD card is installed in the Icom R-30, see section 4

Prepare your receiver:

Do not connect the USB cable yet. Switch on the receiver.

Make the following changes in the MENU:

- R30 USB setup:
 - Select MENU > FUNCTION > USB Connect > SD Card Mode

- R30 SD card setup:
 - Select MENU > SD Card > Import/Export > CSV Format > Separator/Decimal > Sep [,] Dec [.]

Connect a USB cable from the receiver to the PC.

Switch on your receiver.

At the "Connect to PC" prompt select YES using the arrow keys and press MENU/ENTER.

Your receiver is now in USB SD card mode and ready for data transfer from/to ARC30.

2 Read data from receiver:

Prepare your receiver first! Refer to section 1 for receiver SD card mode setup!

You can import data already stored in memory of the Icom IC-R30.
Or you can import a CSV backup file already stored on the SD card.

How to create a CSV backup of your current memory?

- Switch OFF the receiver and disconnect the USB cable
- switch the receive back on
- Press MENU/ENTER
- scroll to SD Card and press MENU/ENTER
- scroll to Import/Export and press MENU/ENTER
- scroll to Export and press MENU/ENTER
- scroll to Memory CH and press MENU/ENTER
- scroll to ALL and press MENU/ENTER
- scroll to the CSV file that you just saved and press MENU/ENTER
- either select an existing file (data will be overwritten in that file) or select <<New File>>

If you select <<New File>> enter a unique filename and confirm by press MENU/ENTER
Confirm by selecting YES

A new CSV file is now created and ready for transfer to ARC30.

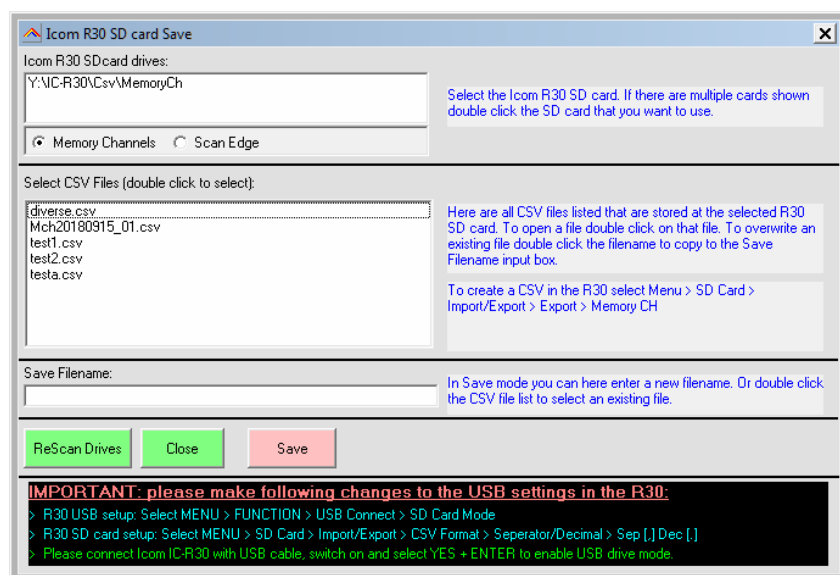
Load a CSV file:

- Connect a USB cable from the receiver to the PC.
- Switch on your receiver.
- At the "Connect to PC" prompt select YES using the arrow keys and press MENU/ENTER.

Your receiver is now in USB SD card mode and ready for data transfer from/to ARC30.

In the software select Scanner > Download from To Scanner or use the toolbar button Read SD.

This will open de Icom R30 SD card save window:

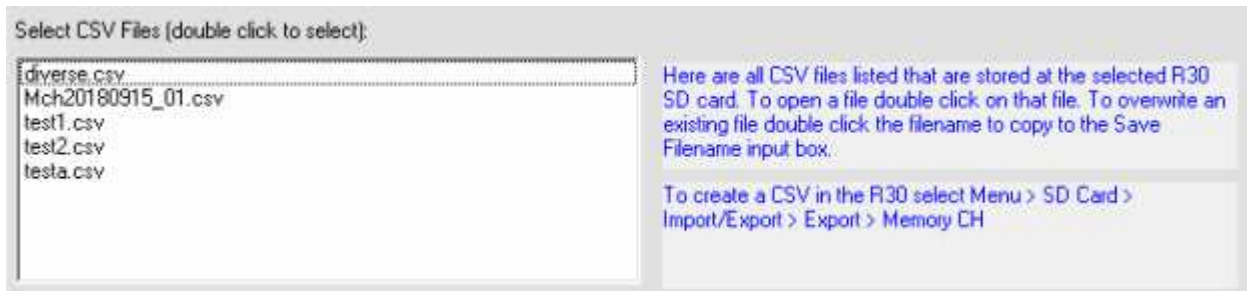


continued >>>

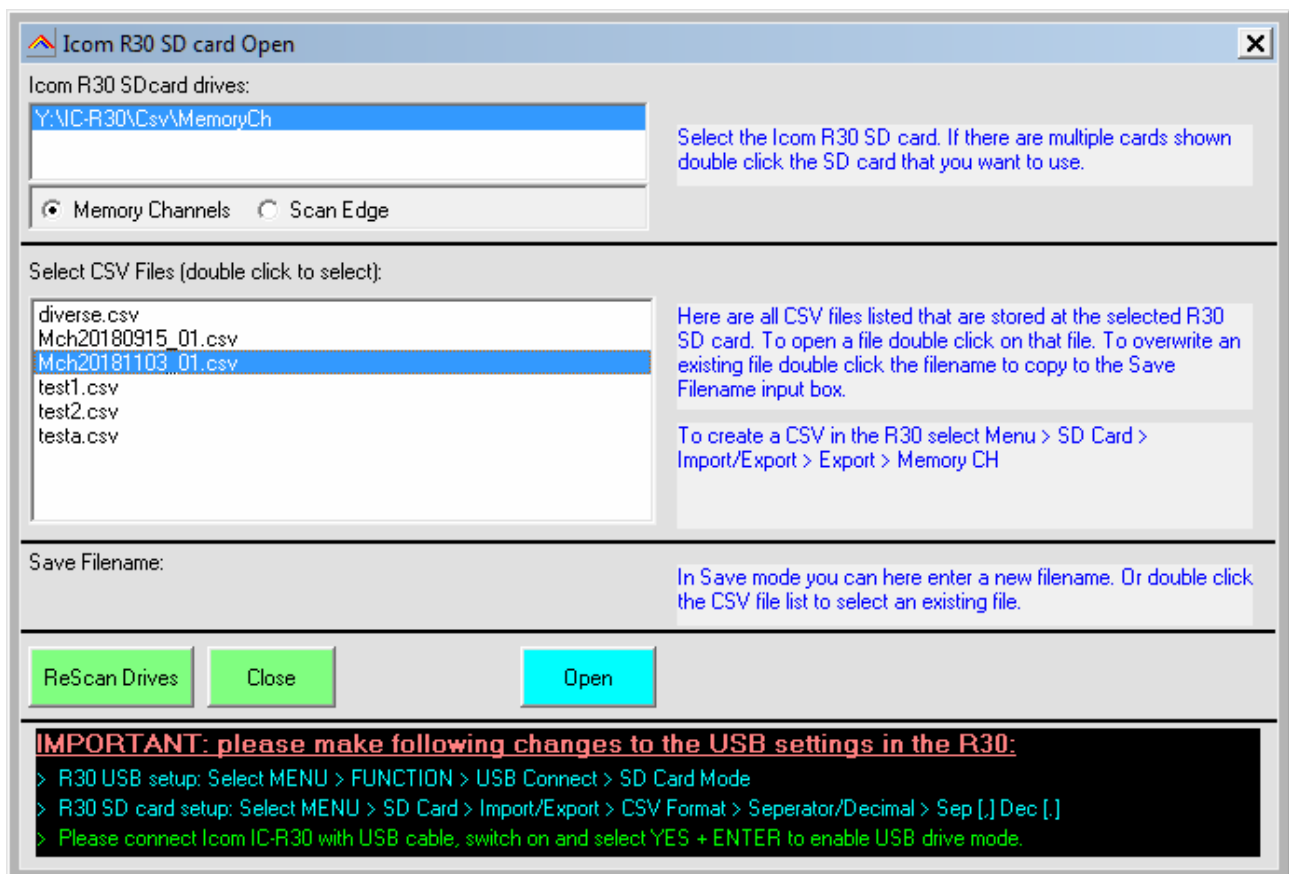
The software will list all R30 drives that are detected:



If there are multiple drives shown double click the R30 SD card that you want to program. This will list .CSV files already stored on that drive:



To load a file simply double click on that CSV file:



3 Send data to Scanner:

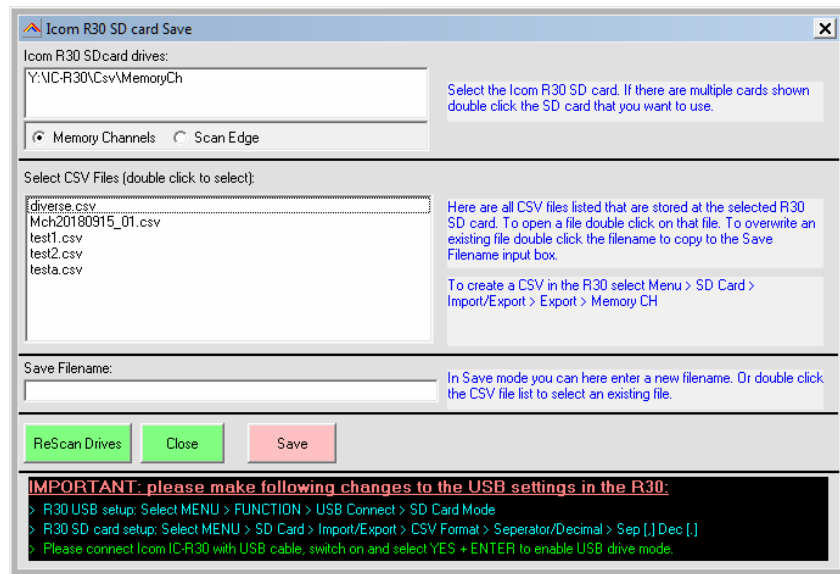
Prepare your receiver first! Refer to section 1.3 for receiver SD card mode setup!

After creating a data file you must upload them to the receivers SD card. Put the receiver in USB storage mode:

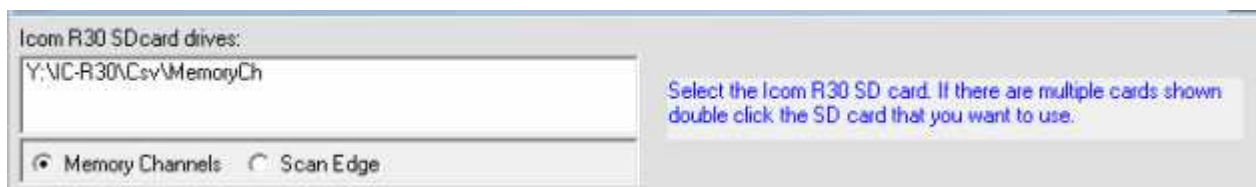
- Connect a USB cable from the receiver to the PC.
- Switch on your receiver.
- At the "Connect to PC" prompt select YES using the arrow keys and press MENU/ENTER.

Your receiver is now in USB SD card mode and ready for data transfer from/to ARC30.

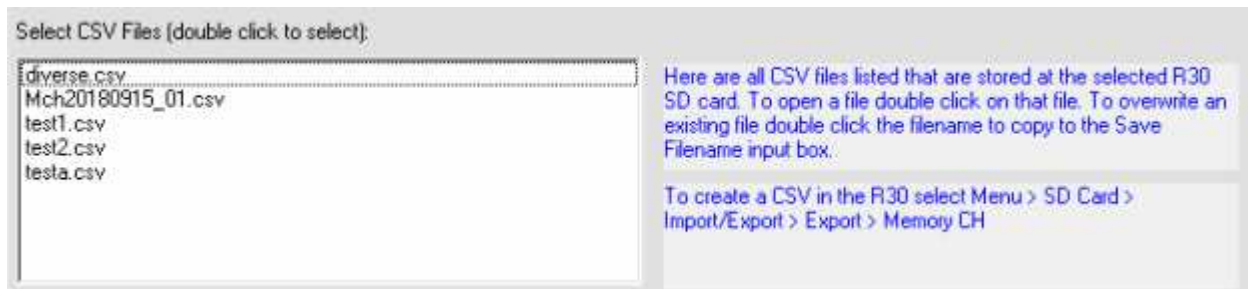
In the software select Scanner > Upload To Scanner or use the toolbar button Write SD. This will open the Icom R30 SD card save window:



The software will list all R30 drives that are detected:



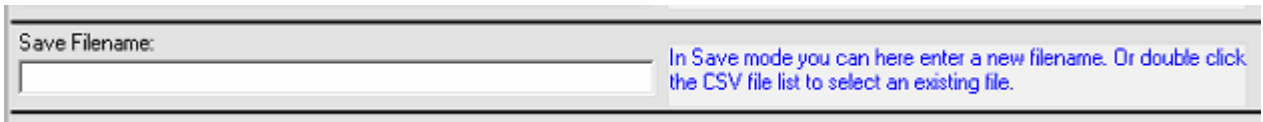
If there are multiple drives shown double click the R30 SD card that you want to program. This will list .CSV files already stored on that drive:



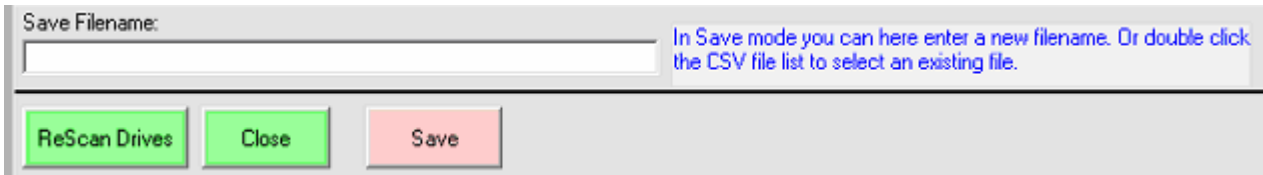
continued>>>

Next enter a file name that you want to use or double click the CSV file list to copy an existing filename in the text box. This will overwrite the existing CSV file.

The maximum length of the filename is 20 characters!



Save Filename: In Save mode you can here enter a new filename. Or double click the CSV file list to select an existing file.



Save Filename: In Save mode you can here enter a new filename. Or double click the CSV file list to select an existing file.

ReScan Drives Close Save

Now hit the Save button. This will store the CSV on the SD card.

To use the uploaded CSV file use these steps:

- Switch OFF the receiver and disconnect the USB cable
- Press MENU/ENTER
- scroll to SD Card and press MENU/ENTER
- scroll to Import/Export and press MENU/ENTER
- scroll to Import and press MENU/ENTER
- scroll to Memory CH and press MENU/ENTER
- scroll to ALL and press MENU/ENTER
- scroll to the CSV file that you just saved and press MENU/ENTER
- confirm by selecting YES that you want to import that file
- Restart the IC-R30
- your file is now ready for use!

4 Insert SD card:

■ Inserting a microSD card

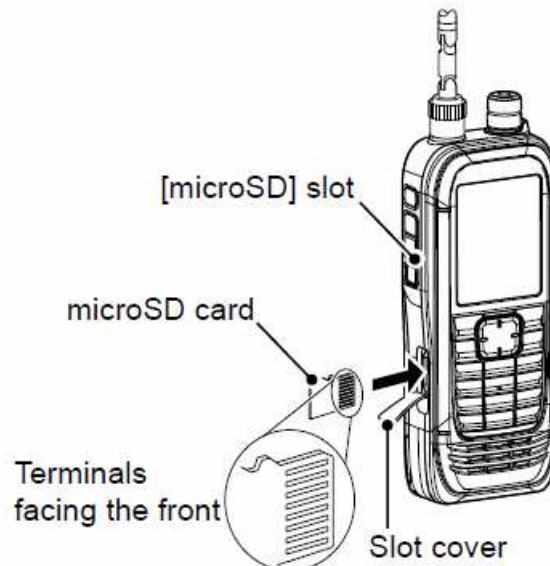
Refer to page 23 for the usable microSD card.

1. Turn OFF the receiver.
2. Pull down the [microSD] slot cover on the side panel.
3. With the terminals facing the front, insert the card into the slot until it locks in place and makes a 'click' sound.
 - ① When removing, push in the microSD card until a 'click' sounds. The card is unlocked, and you can pull it out.

CAUTION:

- **DO NOT** touch the card terminals.
- **DO NOT** remove the card from the receiver while the card is being accessed. Otherwise, the card data may be corrupted or deleted.

4. Completely close the [microSD] slot cover.



CAUTION: DO NOT forcibly or inversely insert the card. It will damage the card or the slot.

5 Formatting the SD card:

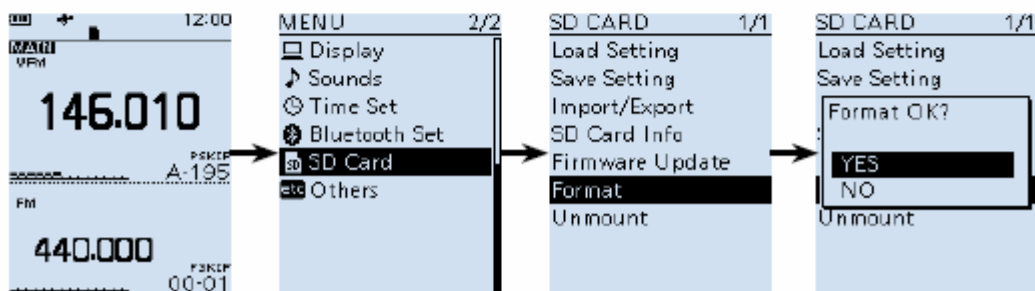
◇ Formatting the microSD card

IMPORTANT! Before using a microSD card, format the card using the receiver.

- ① Formatting a card deletes all its data. Before formatting any used card, back up its data onto your PC.

[MENU] > SD Card > Format

1. Turn ON the receiver.
 - ① If a microSD card is inserted, "■" is displayed.
 - ① When accessing, "■" and "■" alternately blink.
2. Push [MENU].
3. Select "Format" in the "SD Card" menu.
(Rotate [DIAL] to select it, and then push [ENTER].)
 - A confirmation dialog is displayed.
4. Select "YES," and then push [ENTER].
 - The formatting starts and the display shows the formatting progress.
 - After the formatting ends, returns to the MENU screen.
 - ① If "The GPS Logger function is activated." is displayed, turn OFF the function (p. 42) or ignore the message and select "YES."
5. Push [CLEAR] to return to the Main screen.



6 SD card info:

The Icom IC-R30 support the following SD cards:

You can use a microSD card of up to 2 GB, or an microSDHC card of up to 32 GB. Icom has checked the compatibility with the following microSD and microSDHC cards.

(As of April 2018)

Brand	Type	Memory size
SanDisk®	microSD	2 GB
	microSDHC	4 GB
		8 GB
		16 GB
		32 GB

- ① The performance of the cards listed above is not guaranteed.
- ① Throughout the rest of this document, the microSD card and an microSDHC card are simply called the microSD card or the card.
- ① If you use a brand new microSD card, be sure to format it. (p. 5)

Make sure that you format the SD card before using it. See next page for the correct procedure.

Scanner USB connection:

A USB cable is required to connect the receiver to your PC. USB drivers are not required. The R30 SD card will be recognized as a USB drive.