



www.butelsoftware.com
info@butel.nl



www.scannermaster.com
US Sales: 1-800-SCANNER
Americas and Asia Distributor

BuTel Software - Scanner Over Ip - RemoteClient software - 1.01 - July 2004.
<http://www.butelsoftware.com>

Software installation:

Run setup.exe, software installer will install the RemoteServer software

Start software:

Select START _ PROGRAMS _ Scanner Over IP _ RemoteClient

Network IP Port setup:

RemoteClient can only connect to RemoteServer by it's unique IP address / DNS server name.
Start the software and select EDIT _ IP SETUP. The following window is shown:

	Server Name:	IP address:	Port:	Audio Port:
1:	Test site Amsterdam	113.24.78.31	1010	1011
2:				
3:				
4:				
5:				
6:				

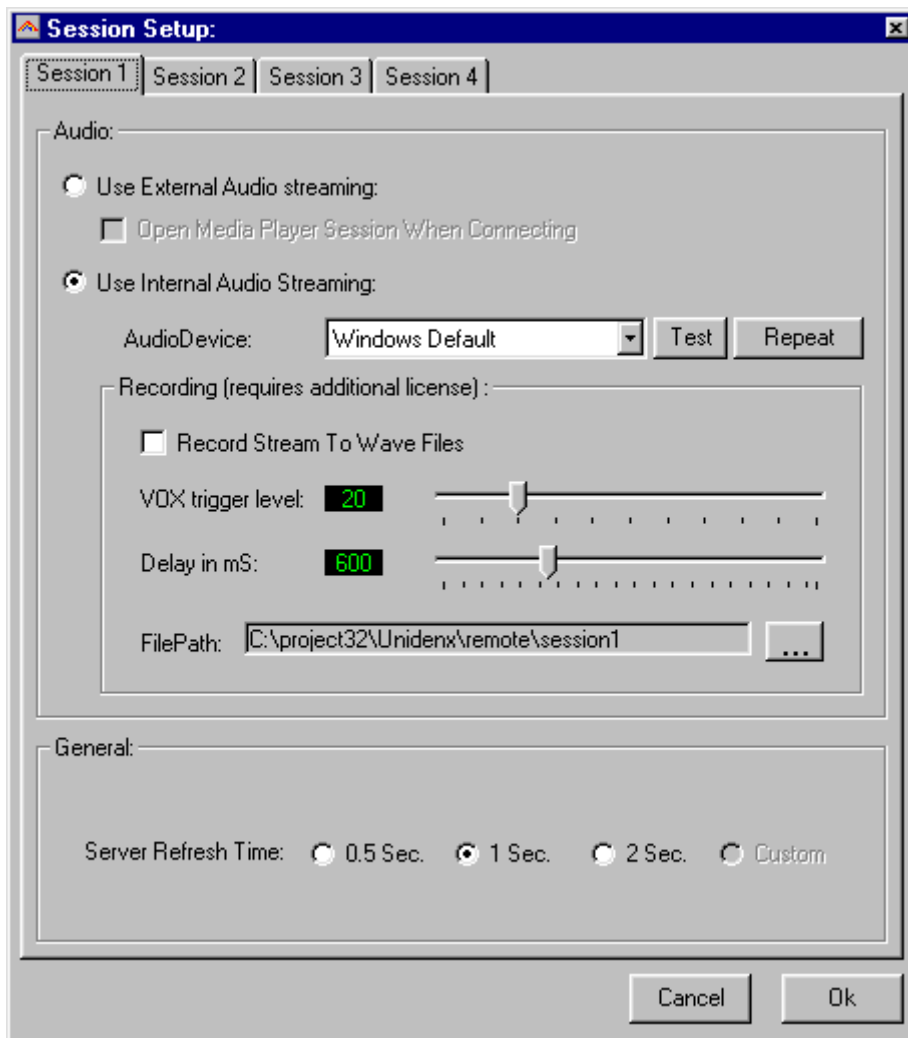
Enter the RemoteServer IP address and ports used for data and audio. Instead of IP address you can also enter the DNS name of the server (in case the server is running dynamic IP software).

The server name is used to identify different streams, this text is shown in the scanner control window.

Select OK to close window, the settings are stored. You must close and re-open sessions to apply the new IP/port settings.

Audio Setup:

After entering the IP and port data, you must setup the audio settings. Select EDIT _ OPTIONS.



Internal/External Audio Streaming: Scanner Over IP has a build in audio stream service. If for some reason you do not want to use this option, select the external audio streaming option.

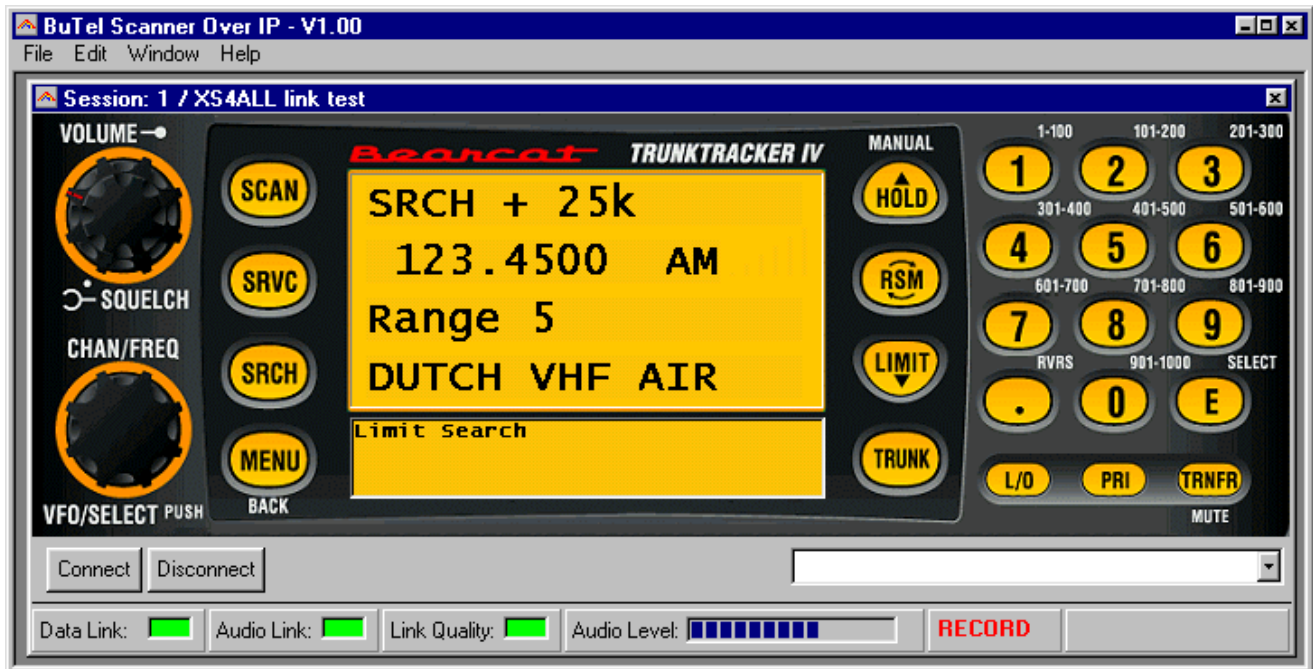
Audio Device: if more then one audiocard is installed, you must select which soundcard must be used per stream. If only one soundcard is installed select 'Windows Default'.

Recording: Depending on the license, the client software can save incoming audio data into wave files. This process is VOX triggered. Set the VOX level so recording starts only when voice is heard.

Delay: set the delay in mS before saving the wave file.

Filepath: select the folder where the audio files are stored. It is advised to select a different folder for every session.

Server Refresh Time: select the interval at which the server sends display data to the server.



Using the remote scanner display:

Connect:

Make sure the RemoteServer is running, select the server from the dropdown list and click 'CONNECT'. The software will now try to connect with the server. Once a connection is established, the Data and Audio Link indicators should turn green.

Disconnect:

Click disconnect to break connection with the server.

User Tips:

The scanner display supports left and right mouse button clicks. Use left button clicks to 'press' the buttons. Some buttons also support the right mouse click, this is the same as press and hold on the scanner itself. For example the MUTE function is set by a right mouse click on the 'TRNFR' button.

Link Quality: the link quality indicator should normally be green. In case of dataloss the indicator will turn red. If the link quality indicator often turns red, this normally indicates that available bandwidth is not sufficient or there is heavy traffic on your network.

Multi Session:

You can open up to 4 sessions. Each session can connect to a different server. Also audio can be routed to separate soundcards and saved in separate directories (additional license required).



www.butelsoftware.com
info@butel.nl



www.scannermaster.com
US Sales: 1-800-SCANNER
Americas and Asia Distributor

Firewall/NAT setup:

Because communication between client and server runs over dedicated ports, the firewall software and modems must be configured to allow data traffic over these ports. Modems may require NAT setup (Network Address Translation). Normally network administrator should know how to do this.

Information about installing extra soundcards:

The 4 scanner version of RemoteServer requires additional soundcards to be installed in your PC. To make sure that Windows correctly installs these extra hardware please follow this procedure:

- Shutdown the PC that runs the RemoteServer PC
- Open the PC and install one new soundcard
- Restart the PC and make sure that Windows identifies the new soundcard and installs the correct drivers.
- Repeat this procedure for every extra soundcard you are installing.

In the Windows device manager, make sure there are no conflicts reported.

After installing the new soundcard hardware, run RemoteServer select the right soundcard per scanner.

Support:

In case of problems please contact info@butel.nl or support@butel.nl